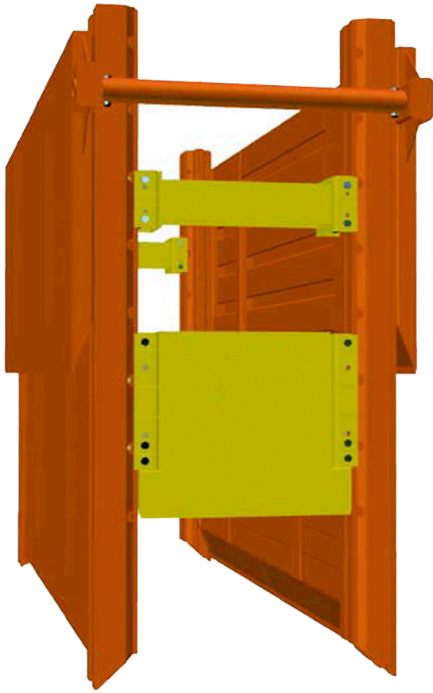


TELESCOPIC BOXES

Steel Trench Box



Specialty Trench Boxes | Titan Series

Drag it. Shore it. Get the job done fast! The Titan Telescopic Box is an all-steel trench shield that is designed for telescopic applications. It's a cross between a drag box system and a slide rail system. The system is assembled from standard components of a drag box, socket rails, and rolling spreaders. The dragging operation is done out of the area of influence and final stage is closed excavation, making for a fast production shoring system. No leapfrogging! No lost time of reassembly!

Features & Benefits

- Lifting Lugs
- Racking Rails
- 18" Knife Edge
- More Pipe Time
- OSHA - Certified
- Modular Systems
- Solid Steel Sockets
- 1/2" x 3" Cutting Bar
- Thick Pounding Pads
- Solid Stacking Lug Bar
- Stackable Rails & Panels
- Owner's Manual & Tabulated Date
- Easy, One-Time Assembly and Flexible Use
- Reinforced Standard Titan Side Walls for Driving
- Full Range Of Models & Sizes To Match Your Needs

Category	Telescopic Boxes
Primary Uses	Mainline Work Requiring Telescopic Applications
Excavator Weight Range	Varies
Production Depth	Varies
Side Wall	Varies

Titan Telescopic Box - Drag It, Shore It. Get the Job Done Fast!

Drive Panels

Are made from the standard Titan Side Wall Panels with the ends designed to accept a vertical Rail Section. An extensive selection of Drive panes exists to match any job requirement.

Rails

A Range of rail sizes and lengths with different configuration are available. The socket rail fits over a standard drag box socket then pinned allowing the rail to slide. The rail can be used as a slide rail, big clear, or in a tandem bay big pit application. Options include clamped on spreader ockets or rolling spreaders.

Rolling Spreaders

Different lengths and configurations are available. The independent rolling spreaders make making adjustments to pipe clearance a synch.